

Incorporated in 1982, Michael Brandman Associates (MBA) has provided thousands of public agencies and private development clients throughout California with environmental management services. Our disciplinary specialties include **environmental planning, regulatory compliance, natural resources management, cultural resources management, restoration planning & monitoring, air quality & climate change**, and **water resources management**.

The MBA team possesses an intimate understanding of environmental regulations, laws, and compliance. Staff has hands-on experience managing complex projects with diverse challenges. As a testament to our skill level, MBA staff is regularly called upon to provide expert testimony & policy analysis, instruct at technical seminars, and lead conferences.

MBA has grown based upon the ability to meet the needs of our clients and provide them with cost-effective, technically-sound, and legally-defensible products.

SERVICES WE CAN PROVIDE

To assist Local Agency Formation Commission (LAFCo) in its role as “watchdog” to “guard against the wasteful duplication of services” (City of Ceres v. City of Modesto) MBA has the experienced staff to assist in:

- Municipal Service Reviews - The municipal service review gathers information on the ability, accountability, and efficiency of service provision of cities and special districts.

Our LAFCo studies provide a thorough analysis of service delivery that complies with Cortese-Knox-Hertzberg, the California Environmental Quality Act, and local policies.

A current municipal service review is required to update the Sphere of Influence.

- Sphere of Influence Updates - The plan for the probable extent of an agency’s boundary and service area. The Sphere of Influence is an important tool LAFCo uses to meet its legislative mandate of discouraging urban sprawl, preserving open space and prime agricultural lands, efficiently providing government services, and encouraging the orderly formation and development of local agencies.



- Change in Organization - Changes in organization include: annexations, consolidations, detachment, and dissolution. MBA has experience analyzing applications for each of the fifteen factors the Commission must consider.

- California Environmental Quality Act (CEQA) Analysis - LAFCo actions are subject to CEQA. MBA will work with our clients

on the Initial Study as well as a Negative Declaration, Mitigated Negative Declaration or Environmental Impact (EIR) Report as needed.

- Staff Support - Once an application or proposal is submitted, LAFCo staff must evaluate its completeness and process the proposal in accordance with local policies, Cortese-Knox-Hertzberg, and CEQA. MBA has experienced staff that has training as LAFCo analysts to assist in processing proposals.

RECENT LAFCO CLIENTS

- Madera LAFCo
- Placer LAFCo
- Solano LAFCo
- San Bernardino LAFCo
- Nevada LAFCo
- Sacramento LAFCo
- Yolo LAFCo

MUNICIPAL SERVICE REVIEWS/SPHERE OF INFLUENCE UPDATES

- Madera County Mosquito Abatement District
- Chowchilla Hospital District
- Madison Community Services District
- Solano County water agencies and reclamation districts
- City of Roseville
- City of Lincoln
- Town of Truckee

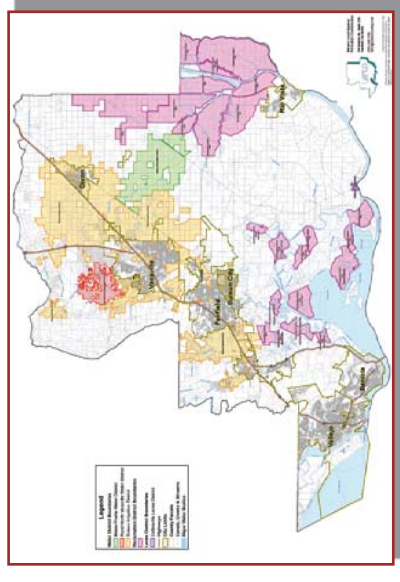
RELATED CEQA STUDIES

- Incorporation of the City of Arden Arcade EIR
- City of Elk Grove Sphere of Influence EIR
- City of Morgan Hill - SE Quadrant and Agricultural Policies EIR
- City of Fontana - Annexation 163 EIR
- Rancho El Rivino Specific Plan Reorganization EIR
- City of San Ramon 2030 General Plan EIR

For More Information Contact:

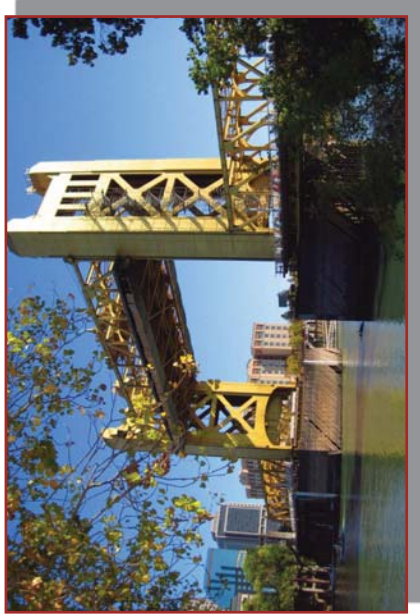
Elliot Mulberg, Senior Environmental Planner
916.447.1100

emulberg@brandman.com



MBA ALSO OFFERS THE FOLLOWING SERVICES

- Environmental Planning
- Natural Resources Management
- Regulatory Compliance
- Water Resources Management
- Restoration Planning & Monitoring
- Air Quality & Greenhouse Gas Emissions Analyses



The Mission of MBA is to assist our clients in achieving the delicate, sometimes elusive, balance between environmental protection and development.

MBA is committed to providing excellent service, accurate research, thoughtful recommendations, and innovative solutions for the mutual success of our clients and our practice.

We believe our associates and their expertise are fundamental to this success and we are determined to create a business environment that is people-centered, providing the essential components for professional development and personal well-being.



Michael Brandman, Ph.D.

MBA's Offices are Conveniently Located:

FRESNO

2444 Main Street, Suite 150 ■ 559.497.0310

IRVINE

220 Commerce, Suite 200 ■ 714.508.4100

PALM SPRINGS

340 S. Farrell Drive, Suite A210 ■ 760.322.8847

SACRAMENTO

2000 'O' Street, Suite 200 ■ 916.447.1100

SAN BERNARDINO

621 E. Carnegie Drive, Suite 100 ■ 909.884.2255

SAN RAMON

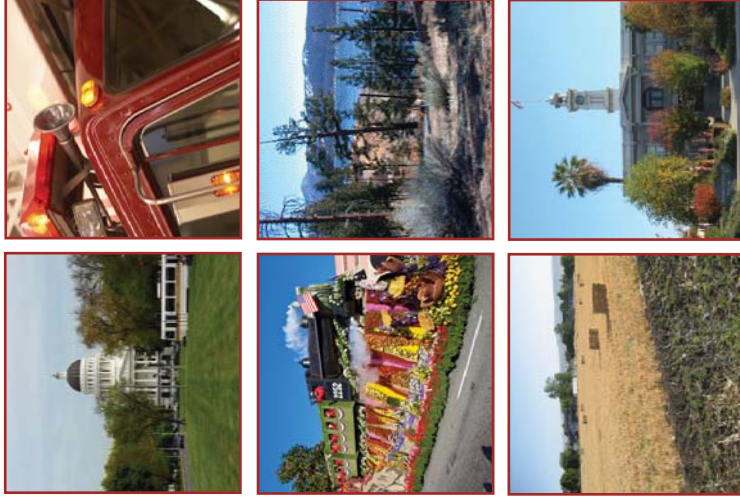
Bishop Ranch 3
2633 Camino Ramon, Suite 460 ■ 925.830.2733



www.brandman.com



Michael Brandman Associates



LAFCo